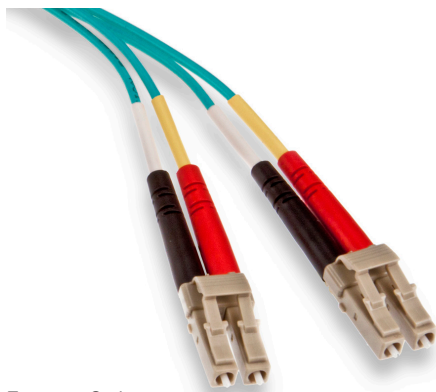


## Economy Series Fiber Optic Patch Cords

### APPLICATION

Leviton Fiber Optic Patch Cords are designed to interconnect or cross connect fiber networks within structured cabling systems. Leviton can produce any standard or custom fiber patch cord to meet your needs, and can offer quick-turn services for fast delivery.

Leviton offers two series of patch cords: Premium Series and Economy Series. Premium Series Patch Cords offer higher performance, optional custom labels, and optional 100% interferometer testing. Economy Series Patch Cords are a price-competitive solution that meets or exceeds all industry standards.



Economy Series  
LC-LC Duplex, OM3 LOMM

### SPECIFICATION

Multimode patch cords shall meet an optical return loss equal to or better than -25 dB per mated pair, and single-mode equal to or better than -50 dB for UPC polish, or -55 dB for APC polish. Insertion loss shall not exceed 0.4 dB per mated pair for multimode and 0.35 dB for single-mode. The patch cords shall be compliant with ANSI/TIA-568-C.3.

### FEATURES

- Available in duplex configurations
- Industry-standard connector options
- All cables 100% optically tested
- Many fiber options: OM1, OM2, OM3, OM4, and OS2
- All cables are pre-labeled and individually bagged

### DESIGN CONSIDERATIONS

- Offered in SC, ST, LC, or hybrid options
- All connectors have precision pre-radiused zirconia ferrules
- ST connectors have metal bodies
- Duplex clips included
- Single-mode SC available in UPC or APC

### STANDARDS COMPLIANCE

Designed to meet the requirements of ANSI/TIA-568-C.3

### COUNTRY OF ORIGIN

China

### WARRANTY INFORMATION

For Leviton product warranties, visit [leviton.com/warranty](http://leviton.com/warranty).

COLOR CODES	
<b>Cable Jackets</b>	
Single-mode	Yellow
Multimode (62.5/125 μm)	Orange
Multimode (50/125 μm)	Orange
Laser optimized multimode (50/125 μm)	Aqua
<b>Connectors and adapters</b>	
Single-mode	Blue
Single-mode, APC (angle polishing)	Green
Multimode (62.5/125 μm)	Beige
Multimode (50/125 μm)	Beige
Laser optimized multimode (50/125 μm)	Aqua (connectors are beige)
<b>Boots (Polarity defined by the following color scheme)</b>	
Single-Mode	Yellow and White
Multimode	Black and Red

PERFORMANCE SPECIFICATIONS		
	Multimode	Single-mode
Insertion Loss	0.4 dB Max	0.35 dB Max
Return Loss	>-25 dB	>-50 dB (UPC), >-55 dB (APC)
Durability	500 Matings	500 Matings
Repeatability	<0.2 dB	<0.2 dB
Operating Environment	-40° C to 75° C	-40° C to 75° C
Cable Retention	>20lbs / 89 N	>20lbs / 89 N
Rohs	Yes	Yes

**PRODUCT SPECIFICATIONS**  
**Economy Series Fiber Optic Patch Cords**



Economy Series Fiber Optic Patch Cords

**PERFORMANCE SPECIFICATIONS (CONT.)**

**Cable Performance**

Fiber Type	Maximum Attenuation (db/km)				Bandwidth (MHz*km)		Transmission Distance (meters)				
	850nm	1300nm	1310nm	1550nm	850nm	1300nm	100Mb	1GbE	10GbE	40GbE	10GbE
Single-mode (OS2)	N/A	N/A	0.4	0.3	N/A	N/A	>5,000 @ 1310nm		>10,000 @ 1310nm	NA	NA
62.5/125 µm MM (OM1)	3.5	1.0	N/A	N/A	200	500	300/2000 @ 850/1300nm	300/600 @ 850/1300nm	36/300 @ 850/1300nm	NA	NA
50/125 µm MM (OM2)	3.0	1.0	N/A	N/A	950	500		750/600 @ 850/1300nm	150/300 @ 850/1300nm	NA	NA
50/125 µm LO (10G-300m) MM (OM3)	3.0	1.0	N/A	N/A	2,000 <sup>1</sup>	500 <sup>2</sup>		1,000/600 @ 850/1300nm	300/300 @ 850/1300nm	100 @ 850nm	100 @ 850nm
50/125 µm LO (10G-550m) MM (OM4)	3.0	1.0	N/A	N/A	4,900 <sup>1</sup>	500 <sup>2</sup>		1,210/600 @ 850/1300nm	600/300 @ 850/1300nm	150 @ 850nm	150 @ 850nm

<sup>1</sup> The effective modal bandwidth is determined based on an overfill launch (OFL per ANSI/TIA-455-204, except on laser-optimized fiber types).

<sup>2</sup> 10GbE transmission @ 1,300 nm only applies to 10GBASE-LX4 (CWDM).

62.5/125 µm MULTIMODE (OM1) OFNR DUPLEX		
DESCRIPTION	LENGTH (METERS)	DUPLEX
SC-SC	1	62DSC-M01
SC-SC	2	62DSC-M02
SC-SC	3	62DSC-M03
SC-SC	5	62DSC-M05
SC-SC	10	62DSC-M10
ST-ST	1	62DST-M01
ST-ST	2	62DST-M02
ST-ST	3	62DST-M03
ST-ST	5	62DST-M05
ST-ST	10	62DST-M10
LC-LC	1	62DLC-M01
LC-LC	2	62DLC-M02
LC-LC	3	62DLC-M03
LC-LC	5	62DLC-M05
LC-LC	10	62DLC-M10
SC-ST	1	62DCT-M01
SC-ST	2	62DCT-M02
SC-ST	3	62DCT-M03
SC-ST	5	62DCT-M05
SC-ST	10	62DCT-M10
SC-LC	1	62DCL-M01
SC-LC	2	62DCL-M02
SC-LC	3	62DCL-M03
SC-LC	5	62DCL-M05
SC-LC	10	62DCL-M10

50/125 µm MULTIMODE (OM2) OFNR DUPLEX		
DESCRIPTION	LENGTH (METERS)	DUPLEX
SC-SC	1	50DSC-M01
SC-SC	2	50DSC-M02
SC-SC	3	50DSC-M03
SC-SC	5	50DSC-M05
SC-SC	10	50DSC-M10
ST-ST	1	50DST-M01
ST-ST	2	50DST-M02
ST-ST	3	50DST-M03
ST-ST	5	50DST-M05
ST-ST	10	50DST-M10
LC-LC	1	50DLC-M01
LC-LC	2	50DLC-M02
LC-LC	3	50DLC-M03
LC-LC	5	50DLC-M05
LC-LC	10	50DLC-M10
SC-LC	1	50DCL-M01
SC-LC	2	50DCL-M02
SC-LC	3	50DCL-M03
SC-LC	5	50DCL-M05
SC-LC	10	50DCL-M10

**Leviton Network Solutions**  
 2222 - 222nd St. SE  
 Bothell, WA 98021-4416

**Asia / Pacific**  
 T +1.631.812.6228  
 E infoasean@leviton.com

**Canada**  
 T +1.514.954.1840  
 E pcservice@leviton.com

**Caribbean**  
 T +1.954.593.1896  
 E info@caribbean@leviton.com

**China**  
 T +852.2774.9876  
 E infochina@leviton.com

**Colombia**  
 T +57.1.743.6045  
 E info@colombia@leviton.com

tel 1-800-824-3005  
 tel +1-425-486-2222  
 appeng@leviton.com  
 www.leviton.com

**Europe**  
 T +33.6.8869.1380  
 E infoeurope@leviton.com

**India / SAARC**  
 T +971.4.886.4722  
 E infoindia@leviton.com

**Mexico**  
 T +52.55.5082.1040  
 E lsamarketing@leviton.com

**Middle East & Africa**  
 T +971.4.886.4722  
 E lmeinfo@leviton.com

**South Korea**  
 T +82.2.3273.9963  
 E info@korea@leviton.com

50/125 μm LOMM (OM3) OFNR DUPLEX		
DESCRIPTION	LENGTH (METERS)	DUPLEX
SC-SC	1	5LDSC-M01
SC-SC	2	5LDSC-M02
SC-SC	3	5LDSC-M03
SC-SC	5	5LDSC-M05
SC-SC	10	5LDSC-M10
LC-LC	1	5LDLC-M01
LC-LC	2	5LDLC-M02
LC-LC	3	5LDLC-M03
LC-LC	5	5LDLC-M05
LC-LC	10	5LDLC-M10
SC-LC	1	5LDCL-M01
SC-LC	2	5LDCL-M02
SC-LC	3	5LDCL-M03
SC-LC	5	5LDCL-M05
SC-LC	10	5LDCL-M10

50/125 μm LOMM (OM4) OFNR DUPLEX		
DESCRIPTION	LENGTH (METERS)	DUPLEX
LC-LC	1	54DLC-M01
LC-LC	2	54DLC-M02
LC-LC	3	54DLC-M03
LC-LC	5	54DLC-M05
LC-LC	10	54DLC-M10
SC-LC	1	54DCL-M01
SC-LC	2	54DCL-M02
SC-LC	3	54DCL-M03
SC-LC	5	54DCL-M05
SC-LC	10	54DCL-M10

9/125 μm SINGLE-MODE (OS2) OFNR DUPLEX		
DESCRIPTION	LENGTH (METERS)	DUPLEX
SC-SC	1	UPDSC-S01
SC-SC	2	UPDSC-S02
SC-SC	3	UPDSC-S03
SC-SC	5	UPDSC-S05
SC-SC	10	UPDSC-S10
LC-LC	1	UPDLC-S01
LC-LC	2	UPDLC-S02
LC-LC	3	UPDLC-S03
LC-LC	5	UPDLC-S05
LC-LC	10	UPDLC-S10
SC-LC	1	UPDCL-S01
SC-LC	2	UPDCL-S02
SC-LC	3	UPDCL-S03
SC-LC	10	UPDCL-S10
ST-ST	1	UPDST-S01
ST-ST	2	UPDST-S02
ST-ST	3	UPDST-S03
ST-ST	10	UPDST-S10
SC-ST	1	UPDCT-S01
SC-ST	2	UPDCT-S02
SC-ST	3	UPDCT-S03
SC-ST	10	UPDCT-S10

APC SINGLE-MODE (OS2) DUPLEX		
DESCRIPTION	LENGTH (METERS)	DUPLEX
SC-SC	1	APSSC-S01
SC-SC	2	APSSC-S02
SC-SC	3	APSSC-S03
SC-SC	5	APSSC-S05
SC-SC	10	APSSC-S10



**Leviton Network Solutions**  
2222 - 222nd St. SE  
Bothell, WA 98021-4416

tel 1-800-824-3005  
tel +1-425-486-2222  
appeng@leviton.com  
www.leviton.com

**Asia / Pacific**  
T +1.631.812.6228  
E infoasean@leviton.com

**Europe**  
T +33.6.8869.1380  
E infoeurope@leviton.com

**Canada**  
T +1.514.954.1840  
E pcservice@leviton.com

**India / SAARC**  
T +971.4.886.4722  
E infoindia@leviton.com

**Caribbean**  
T +1.954.593.1896  
E infocaribbean@leviton.com

**Mexico**  
T +52.55.5082.1040  
E lsamarketing@leviton.com

**China**  
T +852.2774.9876  
E infochina@leviton.com

**Middle East & Africa**  
T +971.4.886.4722  
E lmeinfo@leviton.com

**Colombia**  
T +57.1.743.6045  
E infocolombia@leviton.com

**South Korea**  
T +82.2.3273.9963  
E infokorea@leviton.com