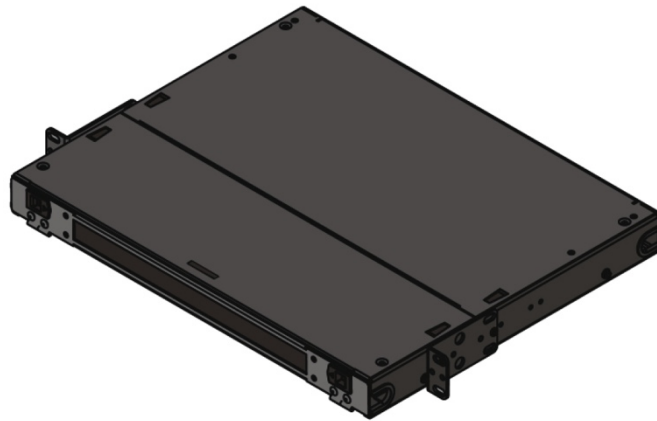


FRM1U

SLIDING FIBER PATCH PANEL 1U



The FRM1U 1U sliding panel with a smoked plexiglass hinged front door, has been designed to accept up to 3 LGX style assemblies. With the ability to use a full array of adapter types, this panel offers a flexible solution to the end user, enabling them to incorporate a multi functional chassis that allows easy access during installation or rework with no disturbance of the existing cable or fibers. In the addition to the array of adaptors the panel also offers multiple cable entry solutions, Designed with cable pairing, connector interface, and mechanical specifications In accordance with TIA/EIA 568.C, ISO/IEC 11801, EN50173, IEC60304, IEC61754, and EN297-1.

- Accepts up to 3 LGX components in 1U of rack space
- 19" and 23" Rack mountable
- Sliding tray with spring loaded tray stop
- Side patch cord exit
- Hinged front plexi glass door
- Removable top cover
- Black powder coated steel construction
- 17.00" W x 14.00" D x 1.77" H

