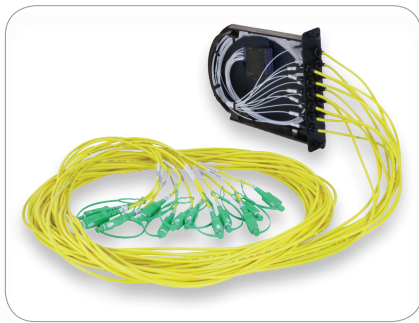


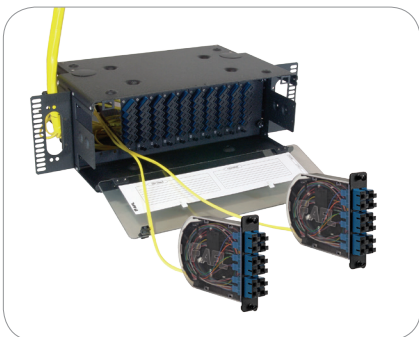
12-Fiber SCIUPC Configuration



24-Fiber LC/UPC Configuration



DAS Poli-MOD



Poli-MOD® Patch and Splice Module

AFL's new Poli-MOD is an innovative patch and splice module, which offers an inventive and effective means to accommodate up to 24 fiber interconnections in an industry-standard, single-slot LGX®118 footprint. The new Poli-MOD offers a unique and robust way to secure cable without the need for time-wasting, tie-wrap alternatives. Additionally, the module leverages a creative snap-in splice sleeve cradle to securely manage both single and ribbon fiber arrangements. These features provide the capacity to outfit a standard 4RU rack-mount panel with up to 288-fiber interconnections.

The Poli-MOD is also offered in an arrangement that supports the low loss budget requirements of Distributed Antenna System (DAS) networks. This is accomplished through the elimination of an interconnection point while providing a robust splicing environment for rack and wall-mount panel applications.

Features

- 24-fiber interconnection capacity
- LGX 118 compatibility (single-slot module)
- Effective and time-saving cable mounting mechanism (no tie-wraps necessary)
- Inventive splice sleeve cradle
- Available in SC, LC, ST and FC connector arrangements
- Shuttered LC connectors for increased dust protection
- Organized fiber routing
- Fixed solution, no moving parts
- Multi-directional cable entry access
- DIN rail mountable (with DIN Mount Kit)

Applications

- Telecommunications Closets
- Data Centers
- Customer Premise
- Local Area Networks
- Wide Area Networks
- Central Offices
- Hub Sites
- Cabinets
- Remote Terminals
- Distributed Antenna Systems (DAS)

LGX is a registered trademark of Furukawa Electric North America, Inc.

Poli-MOD® Patch and Splice Module

Ordering Information

Example: PM-L-12-ASC-0-S-01

PM	L	12	ASC	0	S	01
Configuration	Fiber/Connector Count	Connector Type ³	Fiber Type	Fiber Arrangement	Packaging	
E = Empty (Splicing Only) H = Half Loaded (Adapter Plate only) L = Loaded (Adapter Plate & Pigtailed) D = DAS Poli-MOD ¹	06 = 6 Fibers/Connectors 12 = 12 Fibers/Connectors 24 = 24 Fibers/Connectors ² XX = Empty	ASC = Angle-Polished SC USC = Ultra-Polished SC PSC = Multimode SC ALC = Angle-Polished LC ULC = Ultra-Polished LC PLC = Multimode LC UST = Ultra-Polished ST PST = Multimode ST AFC = Angle-Polished FC UFC = Ultra-Polished FC PFC = Multimode FC XXX = Empty	0 = Single-mode (G.657.A1 BIF) 1 = 62.5 μm (OM1) 2 = 50 μm (OM2) 3 = 50 μm (OM3) 4 = 50 μm (OM4) X = Empty	S = Single/Standard R = Ribbon 3 = 3 mm, 3 meter DAS X = No Fiber (Half Loaded or Empty)	01 = 1 Poli-MOD per box* 06 = 6 Poli-MODs per box 12 = 12 Poli-MODs per box	

1. DAS Poli-MOD requires specialty packaging and is packaged as "1 Poli-MOD per box" ONLY.
2. 24 Fibers/Connectors are only available in a LC Duplex configuration.
3. Angle and Ultra-Polished connector types are only available with single-mode fiber configurations.

Connector Color Codes

CONNECTOR	COLOR
APC (Angled Polish Connector)	Green
UPC (Ultra Polish Connector)	Blue
PC-OM1	Beige
PC-OM2	Black
PC-OM3 / PC-OM4	Aqua

Poli-MOD Kits/Accessories

DESCRIPTION	AFL NO.
Poli-MOD Cable Mounting Clip Kit	FM003053
Poli-MOD Spiral Wrap Kit	FM003280
Poli-MOD Splice Chip Kit with 24 Splice Sleeves	FM003711
Fusion Splice Sleeve, FP-03, 40 mm	S000206
Adapter Bracket for Mounting Single Poli-MOD, angled	FM000948-B
Adapter Bracket for Mounting Single Poli-MOD, flat	FM003589-B
Corning CCH and PCH 145 mm Adapter Bracket	FM001636
DIN Mount Kit, LGX® 118	FM003394

Dimensions

