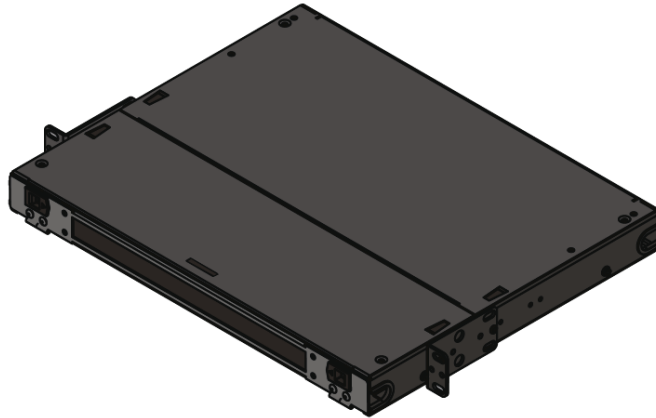


FRM1U Sliding Fiber Patch Panel - 3 Position



Item Description

This innovative, robust, 1U sliding panel with a smoked plexi glass hinged front door, has been designed to accept up to 3 LGX style assemblies. With the ability to use a full array of adapter types, this panel offers a flexible solution to the end user, enabling them to incorporate a multi functional chassis that allows easy access during installation or rework with no disturbance of the existing cable or fibres. In addition to the array of adaptors the panel also offers multiple cable entry solutions, MTP/MPO trunk cables connected to 3 individual MTP/MPO cassettes with up to 24 fibres in each, loose tube cable to be spliced into standard splice cassettes to allow standard splicing or pre terminated solutions, making this panel one of the most flexible on the market.

Features

- Up to 3 LGX components in 1U
- 19" and 23" Rack mountable
- Sliding tray for ease of installation
- Integrated Spring loaded tray stop
- Up to 3 x 24 fibre MTP/MPO cassettes
- Multiple adapter options available
- Side Patch cord exit
- Hinged front plexi glass door
- Removable top cover
- Accepts loose tube, distribution cable and MTP/MPO trunk cable
- RoHS, REACH SvHC
- Data centres, premise installations, telecommunication networks
- Ethernet, Fibre Channel, ATM, LAN, MAN and WAN
- Data communication and telecommunication networks
- Indoor applications

Specifications

1U MODULAR PATCH PANEL CHASSIS

Height	1U
Width	432mm
Depth	356mm
Net weight	5.9kg
Packaged weight	6.3kg
Packaged dimensions	444mm (W) x 508mm (L) x 102mm (H)
IP rating	IP 20
Suitable for Adaptor type	LGX / MTP Cassettes
Number of ports	3
Material	Cold- rolled steel
Material coating	Powder coating
Material thickness	1.2mm
Colour	RAL 9004
Operating temperature	-40°C to +60°C
Designed in accordance with	TIA/EIA 568.C, ISO/IEC 11801, EN50173, IEC60304, IEC61754,
Compliant to	RoHS, Reach/SVHC

